

Chavenage - a very special place for you to share & celebrate in style



Chavenage

Chavenage House, Garden and Grounds are available for hire. No two functions are the same. We can guide you to plan your event to suit your own individual requirements.

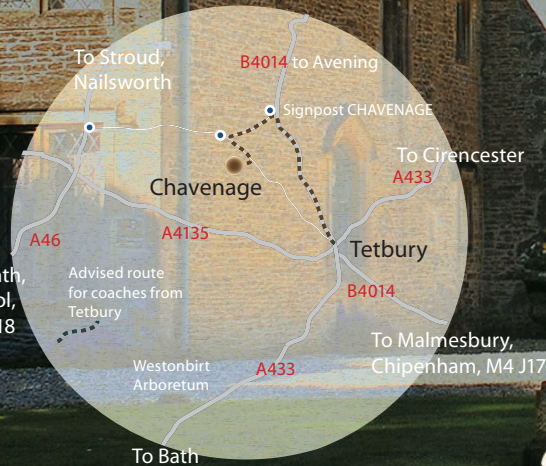
Chavenage can be used for:

- Film and TV productions*
- Photo-Shoots*
- Christenings in Private Chapel*
- Weddings*
- Anniversary, Birthday and Family Parties*
- Lunches and Dinners*
- Product Launches Corporate Events Team Building*
- Conferences Seminars*
- Cycle/Car Rallies*



Chavenage

OPEN FOR GUIDED TOURS
FROM MAY THROUGH TO SEPTEMBER
THURSDAYS AND SUNDAYS
2pm-5pm. Last admission 4pm
Also Easter Sunday and Bank Holiday Mondays



Groups and Coach parties welcome at any time throughout the year by appointment. Meals and refreshments are available for groups by prior arrangement.



Chavenage is close to the Cotswold towns of:
Tetbury 2 miles, Stroud 7 miles, Cirencester 10 miles

For further information contact: Caroline Lowsley-Williams
The Office, Chavenage, Tetbury, Glos. GL8 8XP
Tel: 01 666 502329/504696
email: info@chavenage.com

www.chavenage.com

Chavenage



An Elizabethan Jewel,
set in The Cotswolds

Designed by Ziggurat. info@zigguratdesign.co.uk



Chavenage is a wonderful Elizabethan house of mellow grey Cotswold stone and tiles which contains much of interest to the discerning visitor. Only two families have owned the house since the Dissolution of the Monasteries, firstly the Stephens family and since 1891 the Lowsley-

Williams'. The approach aspect is virtually as left by Edward Stephens in 1576. His grandson, Col. Nathaniel Stephens, MP for Gloucestershire during the Civil War, was cursed for supporting Cromwell, giving rise to legends and mysterious happenings at Chavenage ever since.



There are many interesting rooms housing tapestries, fine furniture, pictures and relics of the Cromwellian period. Of particular note are the Great Hall, where a contemporary screen forms a minstrels' gallery, and the two tapestry rooms, where it is said Cromwell slept.



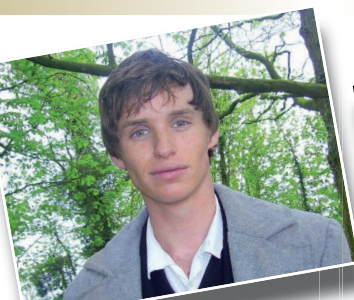
Chavenage

Chavenage has often been used for a location for TV and film productions. Credits include: **Barry Lyndon**, the **Hercule Poirot** story **The Mysterious Affair at Styles**, **The House of Elliot**, **Casualty**, **Cider with Rosie**, **Dracula**, **Lark Rise to Candleford**, **Bonekickers** and **Tess of the D'Urbervilles** starring Gemma Arterton and Oscar winning Eddie Redmayne. Recently Channel 4's historical drama **New Worlds** starring Jamie Dornan, and scenes from the BBC's **Wolf Hall**, were filmed at Chavenage which also features as Trenwith House in **Poldark**.



Above: Aiden Turner as Ross Poldark
Right: Heida Reed as Elizabeth

Below: Eddie Redmayne
Below right: Jamie Dornan in 'New Worlds'



Chavenage is the ideal attraction for those wishing an intimate, personal tour, usually conducted by a member of the family, or for groups wanting a change from larger establishments. Meals for pre-arranged groups have proved hugely popular. It also provides a charming venue for wedding receptions, small conferences and other functions.

